

**Driving Directions:**

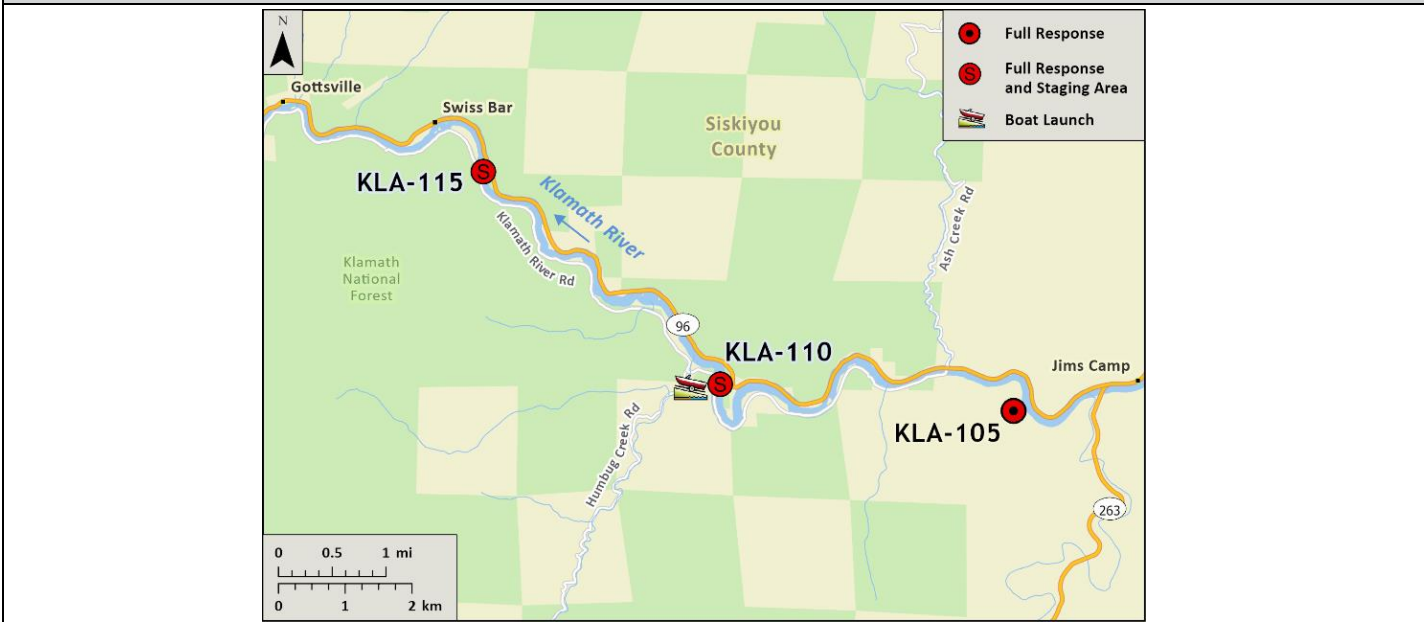
From North: Take I-5 South and take Exit 786, turn west (left) onto Anderson Grade Road and cross over the Klamath River. Turn south (left) onto Hwy 96 toward Happy Camp/Willow Creek. Continue 2.5 miles west after crossing over Ash Creek and turn left into Tree of Heaven Campground.

From South: Take I-5 North and take Exit 786, merge directly onto Hwy 96. Continue south and west on Hwy 96 toward Happy Camp/Willow Creek and cross over the Ash Creek bridge. Continue 2.5 miles west and turn left into Tree of Heaven Campground.

<b>Latitude/Longitude:</b> 41.83091, -122.66113	<b>Highway Postmile:</b> Hwy 96 SIS 99.00	<b>Railroad Milepost:</b> N/A	<b>Cell Service:</b> No - Verizon tested
--	--	-------------------------------	--

**Nearest Address:** Salmon River and Scott River Ranger Districts, Yreka, CA 96097

**Overview Street Map**



**Hazards, Restrictions and Advice for Responders**

- Responders should be aware of seasonal swift water concerns. See nearest gauge for flow information at: [CNRFC - Hydrology - River Guidance - Graphical RVF - IRGC1 \(noaa.gov\)](https://www.cnrfc.noaa.gov/hydrology/river-guidance/graphical-rvf-irgc1).
- Boat launches may become impacted/unusable during years with excess sediment load being transported downstream or inaccessible during high flow conditions.
- Toxic algal blooms have been known to occur during periods of warm weather and low river flow. Avoid water contact during these conditions. The following website tracks voluntary reporting of locations where toxic algal blooms have been reported: [https://mywaterquality.ca.gov/habs/where/freshwater\\_events.html](https://mywaterquality.ca.gov/habs/where/freshwater_events.html)

**Resources-At-Risk**

**Ecological:** Chinook Salmon, Coho Salmon, Pacific Lamprey, Klamath River Lamprey, Lower Klamath Marbled Sculpin, Northern Spotted Owl, Steelhead, Foothill Yellow-legged Frog, Western Pond Turtle

**Economic:** Local tourism



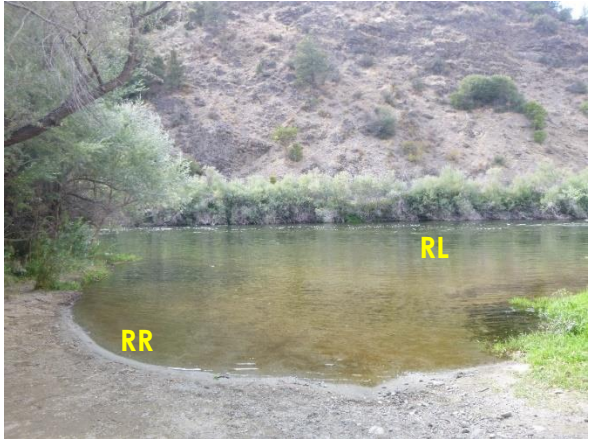
**Tribal:** Contact the Native American Heritage Commission at (916) 373-3710.

**Cultural and Historic:** Contact the Northeast Information Center at (530) 898-6256.

**Site Description and Field Notes**

<p><b>Site Location/Segment:</b> KLA-SK-B-020</p>	<p><b>Site Description and Field Notes:</b> This is a popular location for recreators for its shady and grassy campsites. Drinking water and vault bathrooms available on site. There is a concrete ramp to the river in this location. Elevation is at 2100 ft.</p>			
<p><b>Gradient:</b> Low (summer flow)</p>	<p><b>River Width:</b> 45.72 m (150 ft)</p>	<p><b>Vehicular Access:</b> All vehicle types can access this location.</p>	<p><b>Recreational Use:</b> Camping, fishing, rafting/kayaking, water contact.</p>	<p><b>Boat Launches:</b> Small boat launch located at campground. Raft, kayaks, or shallow draft vessels recommended.</p>
<p><b>Site Contact/s:</b></p>	<p>USFS – Klamath National Forest Happy Camp Ranger District (530) 493-2243</p>		<p>Karuk Tribe (530) 493-1600</p>	
<p><b>ESI Shoreline Type:</b></p>	<p>Vegetated, steeply sloping banks (8F); Vegetated low banks (9B).</p>			

**Site Images**

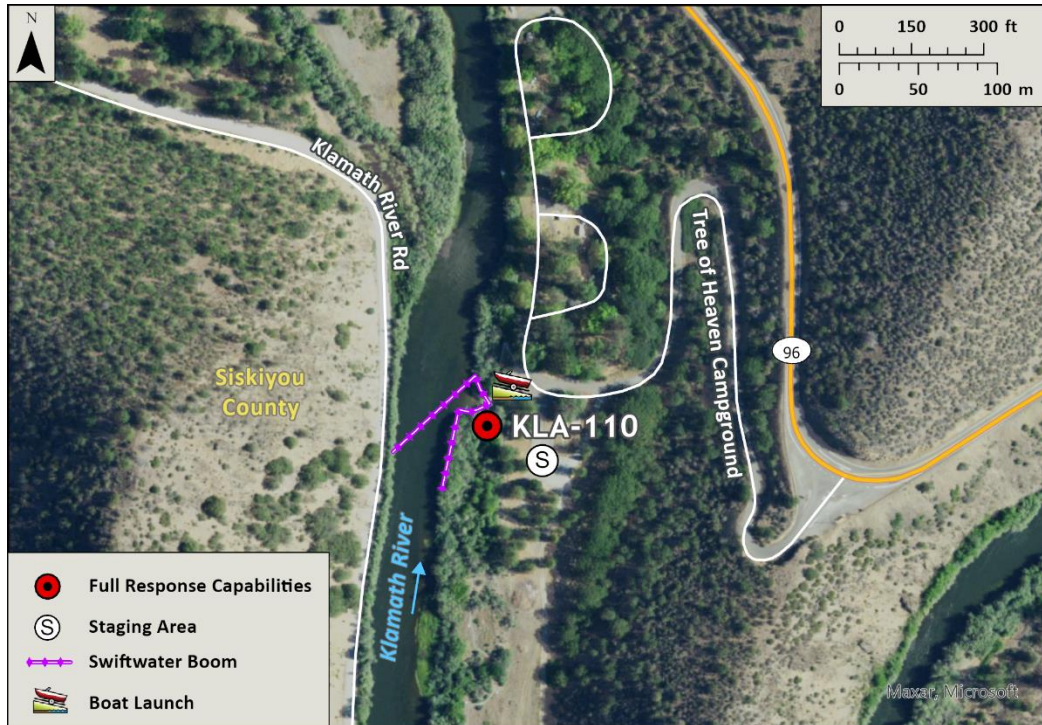
<p>Upstream</p> 	<p>Downstream</p> 
<p>Straight Across</p> 	
<p><b>RR = River Right RL = River Left</b></p>	<p><b>Photo Date:</b> 9/10/2019</p>

**Site Objectives:** Deflection boom with product collection and shoreline protection.

**Implementation:** Start from river-left shoreline above boat launch and deploy 450 feet of swiftwater boom toward eddy at boat launch. Collect product with skimmer and pump directly to vacuum truck or tanks on shore. Deploy additional 200 feet of boom for shoreline protection.

**Staging Area Location and Capabilities/Amenities/Waste Management:** Stage equipment and manage wastes in parking lot of campgrounds.

**Response Strategy Map (overview)**



**Table of Response Resources**

Type	Sub-Type	Size	Unit	Quantity	Special Equipment or Comments
Boom	Swiftwater	8 to 12-in. skirt	Feet	650	Need ancillary equipment including anchors and stakes
Boom	Sorbent	5 to 8-in. dia.	Feet	1,300	
Pads and Sweep	Sorbent		Bale	40	
Skimmer	Disc or Drum			2	If needed
Response Vessel	Response and Boom Vessel			2	1 each, minimum. Kayaks, rafts, or shallow draft vessels recommended.
Personnel			Crew	6 to 10	2 vessel operators and 2 deckhands, minimum
Vacuum Truck		120	BBL	1	If needed
Storage Tank		20,000	Gallon	5	If needed