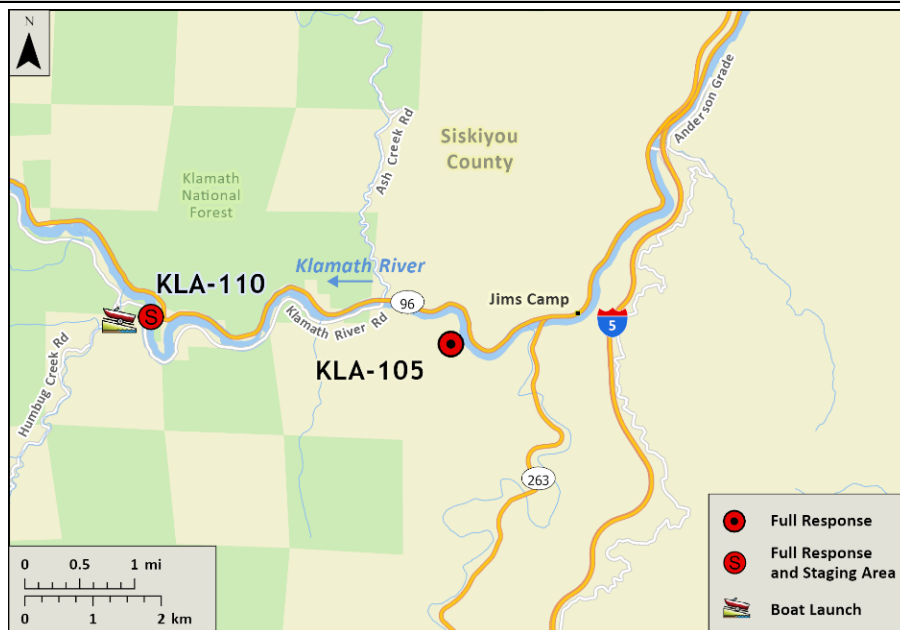


Driving Directions:	<p>From North: Take I-5 South, take Exit 786 and turn west (left) onto Anderson Grade Road and cross over the Klamath River. Turn south (left) onto Hwy 96 toward Happy Camp/Willow Creek. Continue 0.4 miles west after crossing over Ash Creek and turn left onto dirt access path leading to unimproved boat launch at the river.</p> <p>From South: Take I-5 North, take Exit 786 and merge directly onto Hwy 96. Continue south and west on Hwy 96 toward Happy Camp/Willow Creek and cross over the Ash Creek bridge. Continue 0.4 miles west and turn left onto dirt access path leading to unimproved boat launch at the river.</p>		
Latitude/Longitude 41.82891, -122.60484	Highway Postmile: N/A	Railroad Milepost: N/A	Cell Service: No - Verizon Tested

Nearest Address: N/A

Overview Street Map



Hazards, Restrictions and Advice for Responders

- Responders should be aware of seasonal swift water concerns. See nearest gauge for flow information at: [CNRFC - Hydrology - River Guidance - Graphical RVF - IRGC1 \(noaa.gov\)](http://CNRFC - Hydrology - River Guidance - Graphical RVF - IRGC1 (noaa.gov))
- Boat launches may become impacted/unusable during years with excess sediment load being transported downstream or inaccessible during high flow conditions.
- Toxic algal blooms have been known to occur during periods of warm weather and low river flow. Avoid water contact during these conditions. The following website tracks voluntary reporting of locations where toxic algal blooms have been reported: https://mywaterquality.ca.gov/habs/where/freshwater_events.html

Resources-At-Risk

Ecological: Chinook Salmon, Coho Salmon, Pacific Lamprey, Klamath River Lamprey, Lower Klamath Marbled Sculpin, Northern Spotted Owl, Steelhead, Foothill Yellow-legged Frog, Western Pond Turtle

Economic: Rafting guide services, fishing guide services, local tourism.

Tribal: Contact the Native American Heritage Commission at (916) 373-3710.

Cultural and Historic: Contact the Northeast Information Center at (530) 898-6256.

Site Description and Field Notes

Site Location/Segment: KLA-SK-B-015	Site Description and Field Notes: The entrance to this location is a short dirt road to a small turnaround. The ramp to the river is sand and not designed for trailers and RV's. There is limited parking and no facilities. Elevation is at 2300 ft.			
Gradient: Low (summer flow)	River Width: 29.26 m (96 ft)	Vehicular Access: All vehicle types can access this location.	Recreational Use: Fishing, rafting, kayaking, water contact	Boat Launches: Unimproved boat launch for rafts and kayaks exists at the response site location.
Site Contact/s:	Bureau of Land Management Redding Field Office (530) 224-2100 M-F 8 to 5 (530) 941-1741 After Hours		Karuk Tribe (530) 493-1600	
ESI Shoreline Type:	Vegetated, steeply sloping banks (8F); Vegetated low banks (9B).			

Site Images

Upstream



Downstream



Straight Across



RR = River Right RL = River Left

Photo Date: 8/1/2019

Site Objectives: Deflection boom with product collection and shoreline protection.

Implementation: Start from river-left shoreline above boat launch and deploy 300 feet of swiftwater boom toward eddy at boat launch. Collect product with skimmer and pump directly to vacuum truck or tanks on shore. Deploy additional 200 feet of boom for shoreline protection.

Staging Area Location and Capabilities/Amenities/Waste Management: Stage equipment and manage wastes in open area above boat launch.

Response Strategy Map (overview)

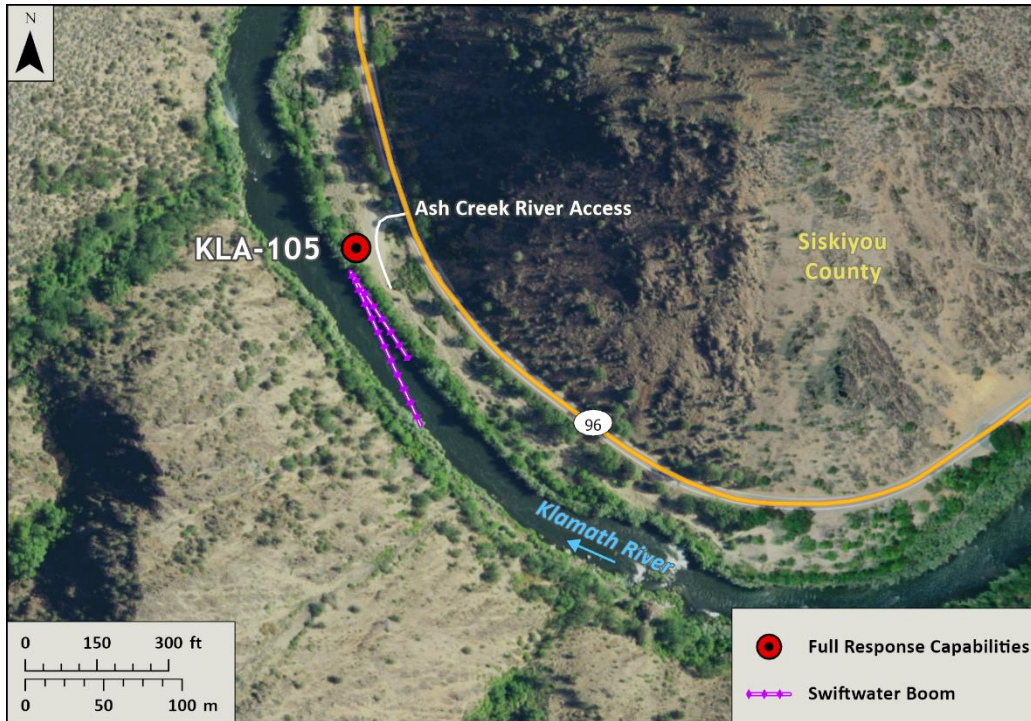


Table of Response Resources

Type	Sub-Type	Size	Unit	Quantity	Special Equipment or Comments
Boom	Swiftwater	8 to 12-in. skirt	Feet	500	Need ancillary equipment including anchors and stakes
Boom	Sorbent	5 to 8-in. dia.	Feet	1,200	
Pads and Sweep	Sorbent		Bale	40	
Skimmer	Disc or Drum			2	If needed
Response Vessel	Response and Boom Vessel			2	1 each, minimum. Kayaks, rafts, or shallow draft vessels recommended.
Personnel			Crew	6 to 10	2 vessel operators and 2 deckhands, minimum
Vacuum Truck		120	BBL	1	If needed
Storage Tank		20,000	Gallon	5	If needed