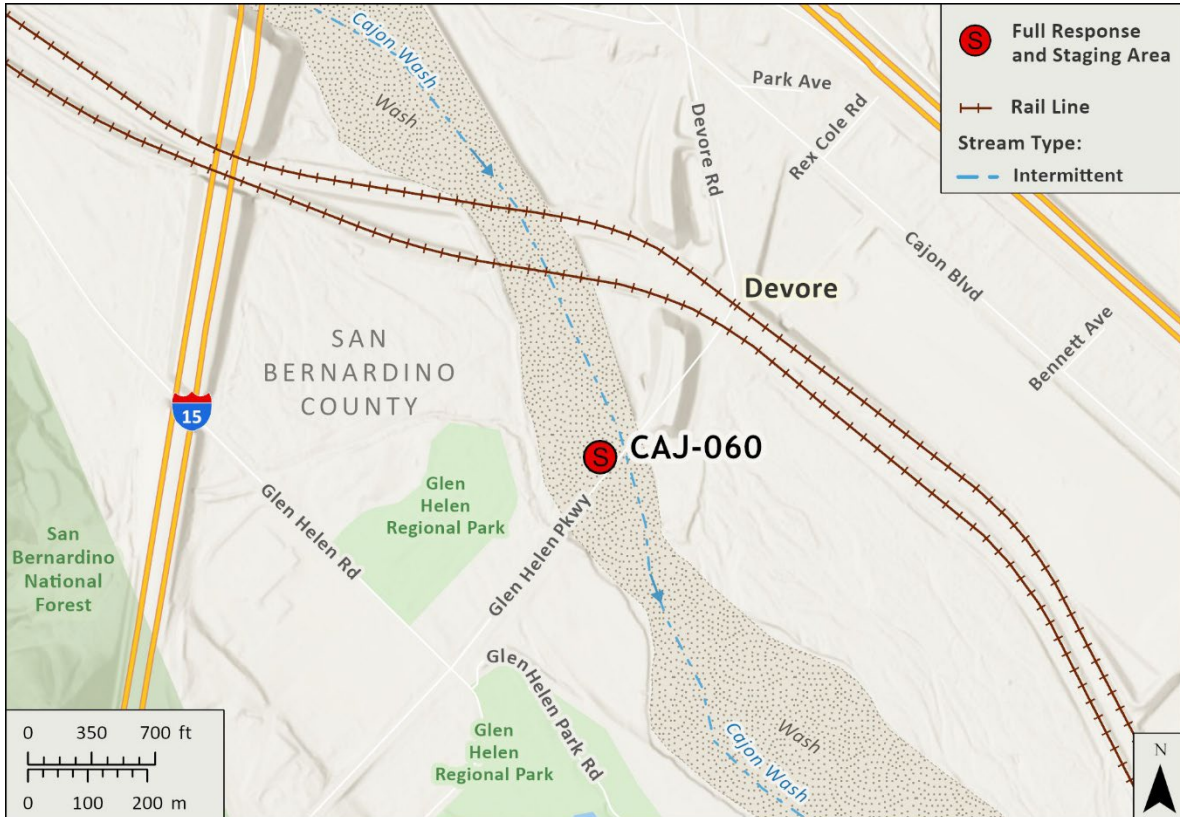


Driving Directions:	From I-15 North exit Glen Helen Parkway, turn right on Glen Helen Parkway. Location is approximately 1.0 mile off the freeway.		
	From I-215 South exit Devore Rd., turn left, go over the bridge, site on your right. Staging area to the left.		
Latitude/ Longitude: 34.213799, -117.403858	Highway Postmile: N/A	Railroad Milepost: BNSF 70 40	Cell Service: Yes

Nearest Address: 2337 Glen Helen Parkway San Bernardino, CA 92407

Overview Street Map



Hazards, Restrictions and Advice for Responders

- High traffic two lane highway
- Strategy/response will depend on water flow
- Rattlesnakes

Resources-At-Risk

Ecological: Coastal California Gnatcatcher, Pocket Free-tailed Bat, San Bernardino Kangaroo Rat, Pallid San Diego Pocket Mouse, San Diego Desert Woodrat, Northwestern San Diego Pocket Mouse, Coast Horned Lizard, California Glossy Snake, Southern California Legless Lizard, Coastal Whiptail, White-bracted Spineflower, Parry's Spineflower, Santa Ana River Woollystar, Slender-horned Spineflower

Economic: Glen Helen Park, Outdoor Amphitheater, Sherriff's Rodeo

Tribal: Contact the Native American Heritage Commission at (916) 373-3710.

Cultural and Historic: Contact the South Central Coastal Information Center at (657) 278-5395.

Site Description and Field Notes

Site Location/Segment:	Site Description and Field Notes: The area has been modified by manmade means and has been made into an open bowl with gently sloping sides. Heavy rain will alter the area configuration. Several large staging areas with infrastructure, bathrooms, electricity, and running water.			
Gradient: Medium? Not low?	River Width: 14 m (46ft)	Vehicular Access: 4WD	Recreational Use: N/A	Boat Launches: N/A
Site Contact/s:	Glen Helen Regional Park Blane McNally, Chief of Operations (909) 486-9077			
ESI Shoreline Type:	1B Exposed, solid man-made structures; 3B Exposed, eroding banks in unconsolidated sediments; 4 Sandy bars and gently sloping banks			

Site Images

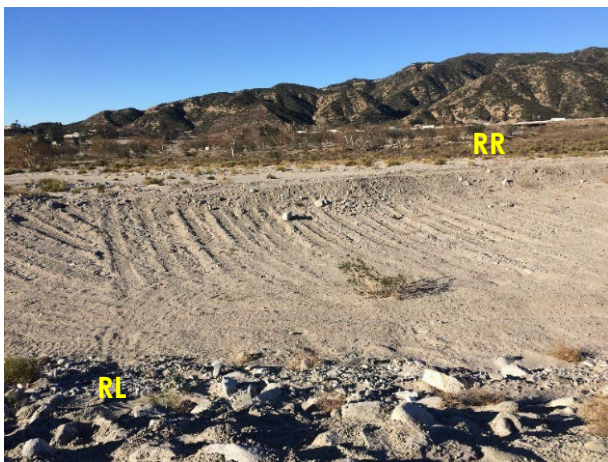
Upstream



Downstream



Straight Across



RR = River Right RL = River Left

Photo Date: 12/28/2017

Site Objectives: Earthen berm/underflow dam to prevent further downgradient migration of oil and enable oil collection when surface water is present. Intercept trench or excavation to capture oil when surface water is absent.

Implementation: Minimize ingress and egress routes through vegetation to prevent erosion and disturbance of the surrounding ecosystem. Weather and water flows will determine specific site strategies.

Staging Area Location and Capabilities/Amenities/Waste Management: Several large staging areas with infrastructure, bathroom, electricity, and running water.

Response Strategy Map (overview)

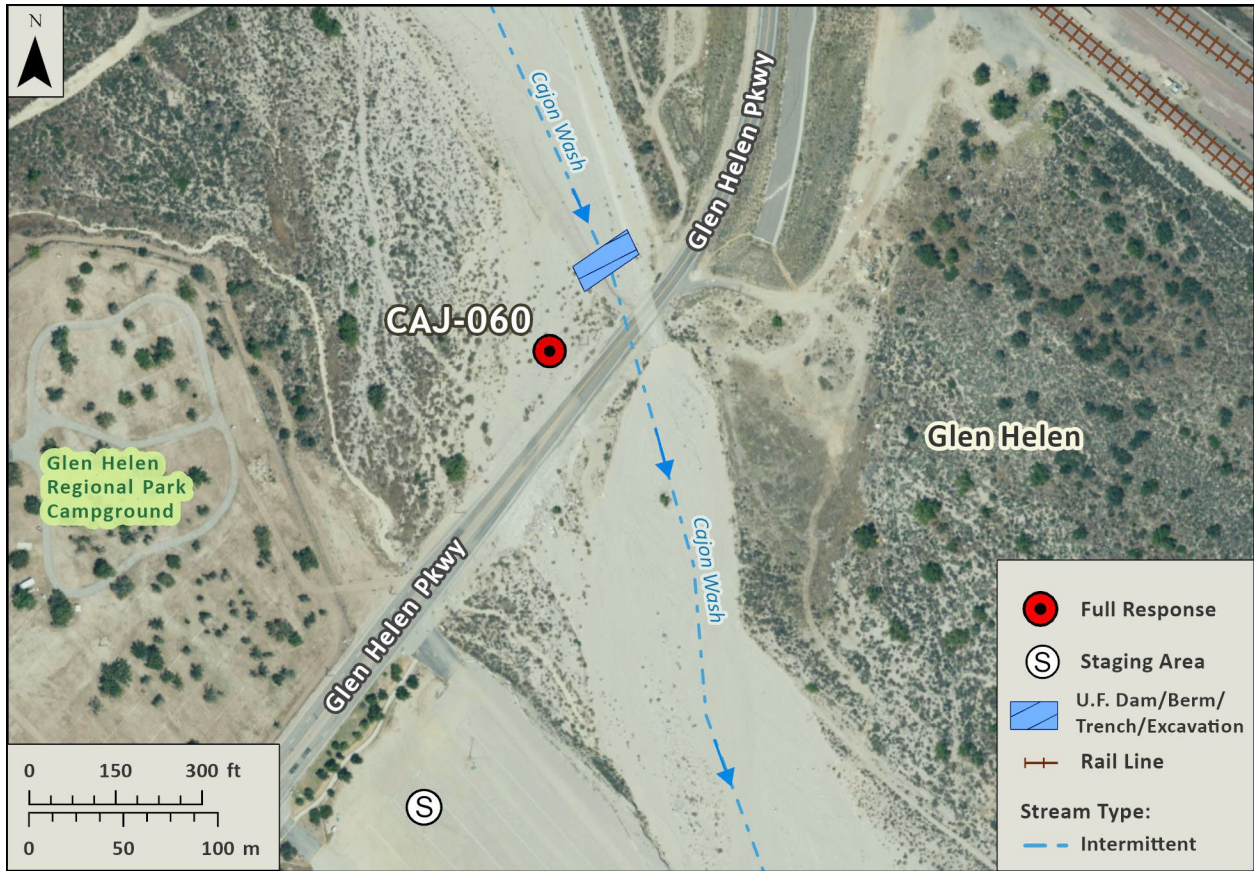


Table of Response Resources

Type	Sub-Type	Size	Unit	Quantity	Special Equipment or Comments
Backhoe/ Excavator					For earthen berm/underflow dam or intercept trench/excavation
Piping					For earthen berm/underflow dam