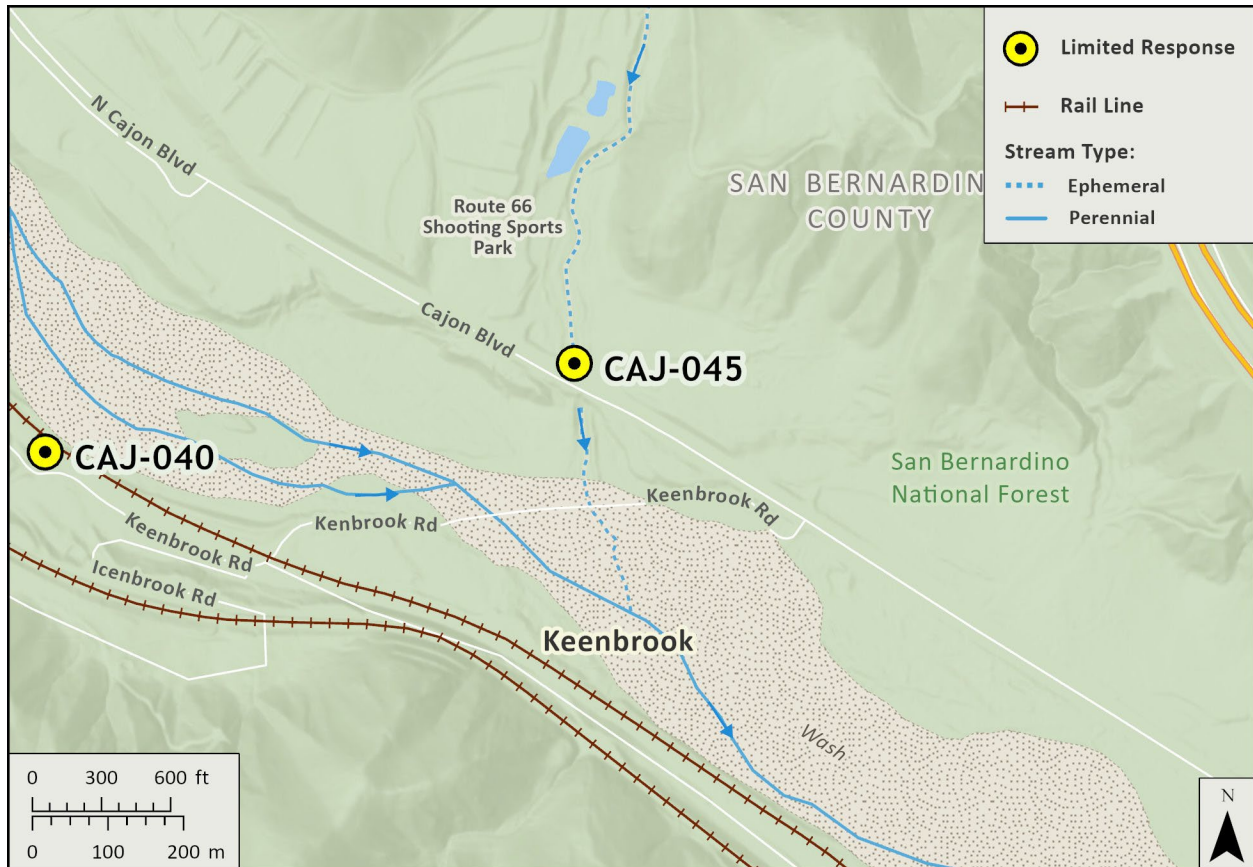


Driving Directions: **From I-15 North** exit Kenwood Ave., turn left and go under the freeway. **From I-15 South** exit Kenwood Ave., turn right. Then make a right onto Cajon Blvd. Travel 2.25 miles, the creek is on your right. Access old Route 66 from Cajon Blvd.

Latitude/Longitude: 34.253397, -117.458019	Highway Postmile: N/A	Railroad Milepost: N/A	Cell Service: Yes
--	---------------------------------	----------------------------------	--------------------------

Nearest Address: 15870 Cajon Blvd. San Bernardino, CA. 92407

Overview Street Map



Hazards, Restrictions and Advice for Responders

- Heavy traffic on Cajon Blvd adjacent to staging area
- Creek access is limited by heavy brush and terrain
- Strategy/Response will depend on water flow
- Shooting range on-site. Work with owners to cease activities while responders and operations are going on.
- Rattlesnakes

Resources-At-Risk

Ecological: Slender-horned Spineflower

Economic: N/A

Tribal: Contact the Native American Heritage Commission at (916) 373-3710.

Cultural and Historic: Contact the South Central Coastal Information Center at (657) 278-5395.

Site Description and Field Notes

Site Location/Segment:	Site Description and Field Notes: Large roadway adjacent to the strategy site, on historic route 66.			
Gradient: Medium	River Width: 50 m (184 ft)	Vehicular Access: 4WD Pickup	Recreational Use: N/A	Boat Launches: N/A
Site Contact/s:	San Bernardino National Forest Front Country Ranger District (909) 382-2851			
ESI Shoreline Type:	3B Exposed, eroding banks in unconsolidated sediments; 9B Vegetated low banks			

Site Images

Upstream



Downstream



Straight Across



RR = River Right RL = River Left

Photo Date: 12/28/2017

Site Objectives: Earthen berm/underflow dam to prevent further downgradient migration of oil and enable oil collection when surface water is present. Intercept trench or excavation to capture oil when surface water is absent.

Implementation: Minimize ingress and egress routes through vegetation to prevent erosion and disturbance of the surrounding ecosystem. Weather and water flows will determine specific site strategies.

Staging Area Location and Capabilities/Amenities/Waste Management: Staging area adjacent to the strategy site, on historic route 66.

Response Strategy Map (overview)

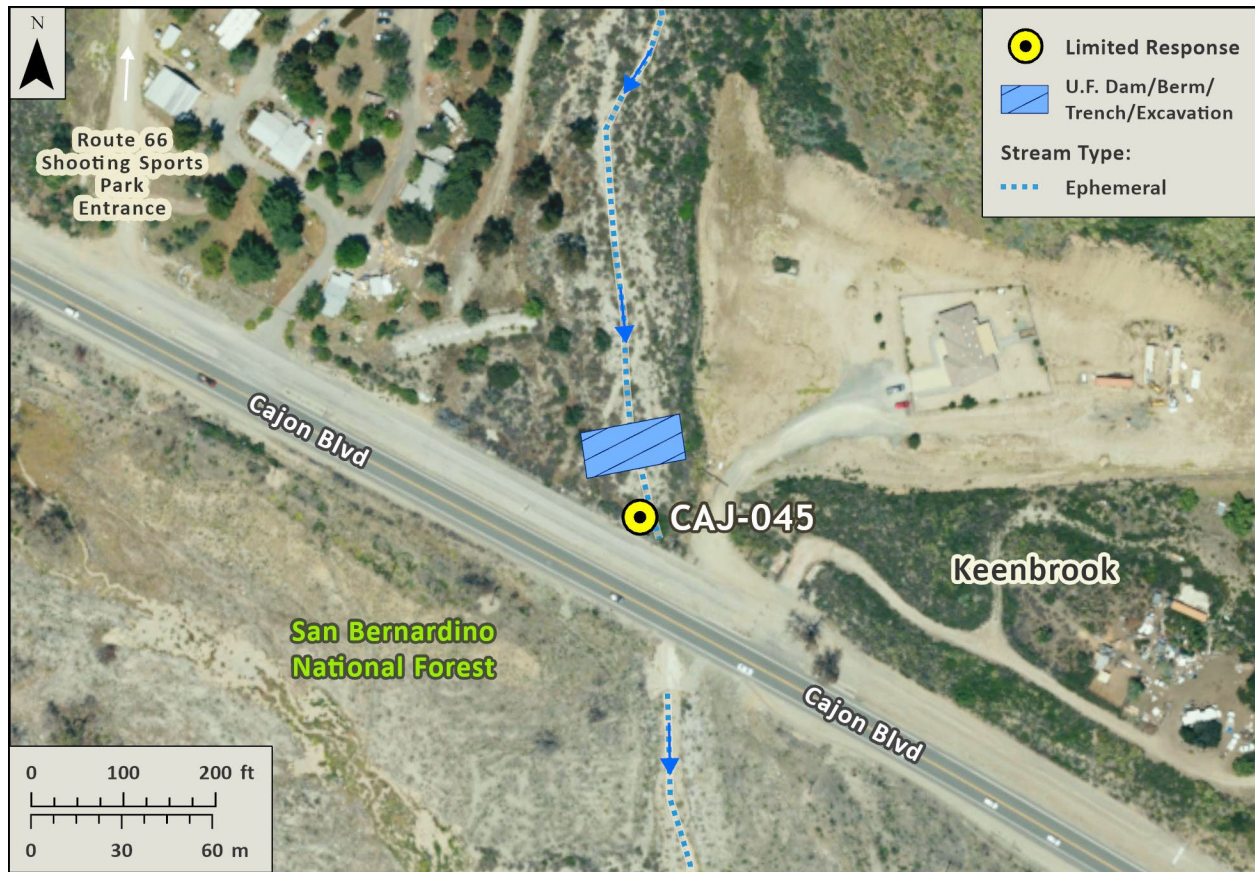


Table of Response Resources

Type	Sub-Type	Size	Unit	Quantity	Special Equipment or Comments
Backhoe/Excavator					For earthen berm/underflow dam or intercept trench/excavation
Piping					For earthen berm/underflow dam