

Driving Directions:

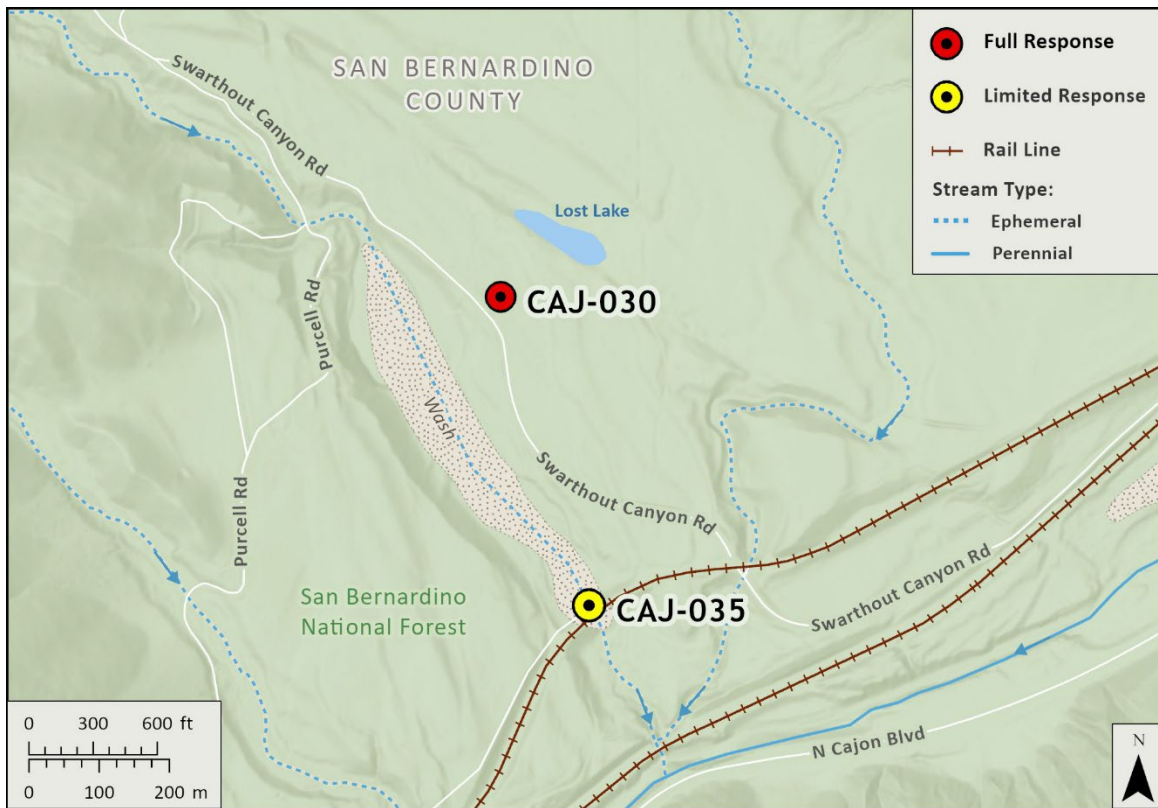
From North I-15 exit Cleghorn Rd., turn left (west) under the freeway. Travel 1.75 miles turn right onto Swarthout Canyon Road. Cross two sets of RR tracks. Travel straight on dirt road .35 miles destination is on the right. Lost Lake parking lot.

From South I-15 exit Cleghorn Rd., turn right. Travel 1.75 miles turn right onto Swarthout Canyon Road. Cross two sets of RR tracks. Travel straight on dirt road .35 miles destination is on the right. Lost Lake parking lot.

Latitude/Longitude: 34.272167, -117.466247	Highway Postmile: N/A	Railroad Milepost: N/A	Cell Service: Yes
------------------------------------------------------	---------------------------------	-------------------------------	--------------------------

Nearest Address: 12104 Swarthout Canyon Rd. San Bernardino 92407

Overview Street Map



Hazards, Restrictions and Advice for Responders

- Locked gate for parking area
- Moderate sloped access
- Strategy will depend on prevention into the lake or control strategies on the lake
- Rattlesnakes

Resources-At-Risk

Ecological: Least Bell's Vireo, Bell's Sage Sparrow, Coastal Whiptail, White-bracted Spineflower, Shortjoint Beavertail

Economic: N/A

Tribal: Contact the Native American Heritage Commission at (916) 373-3710.

Cultural and Historic: Contact the South Central Coastal Information Center at (657) 278-5395.

Site Description and Field Notes

Site Location/Segment:	Site Description and Field Notes: There is a small dirt parking lot with no facilities. Access to the lake is over a small hill.			
Gradient:	River Width: 75m (246ft)	Vehicular Access: No	Recreational Use: Fishing	Boat Launches: N/A
Site Contact/s:	San Bernardino National Forest Front Country Ranger District (909) 382-2851			
ESI Shoreline Type:	3A Fine to medium-grained sand; 9B Vegetated low banks; 10B Freshwater marshes			

Site Images

Upstream



Downstream



Straight Across



RR = River Right RL = River Left

Photo Date: 12/28/2017

Site Objectives: Earthen berm/underflow dam to prevent flow of oil into the lake. Boom to prevent further movement of oil in the Lake.

Implementation: Minimize ingress and egress routes through vegetation to prevent erosion and disturbance of the surrounding ecosystem. Weather and water flows will determine specific site strategies. Width of lake is narrow enough to walk on either side to deploy boom.

Staging Area Location and Capabilities/Amenities/Waste Management: Use dirt parking lot.

Response Strategy Map (overview)

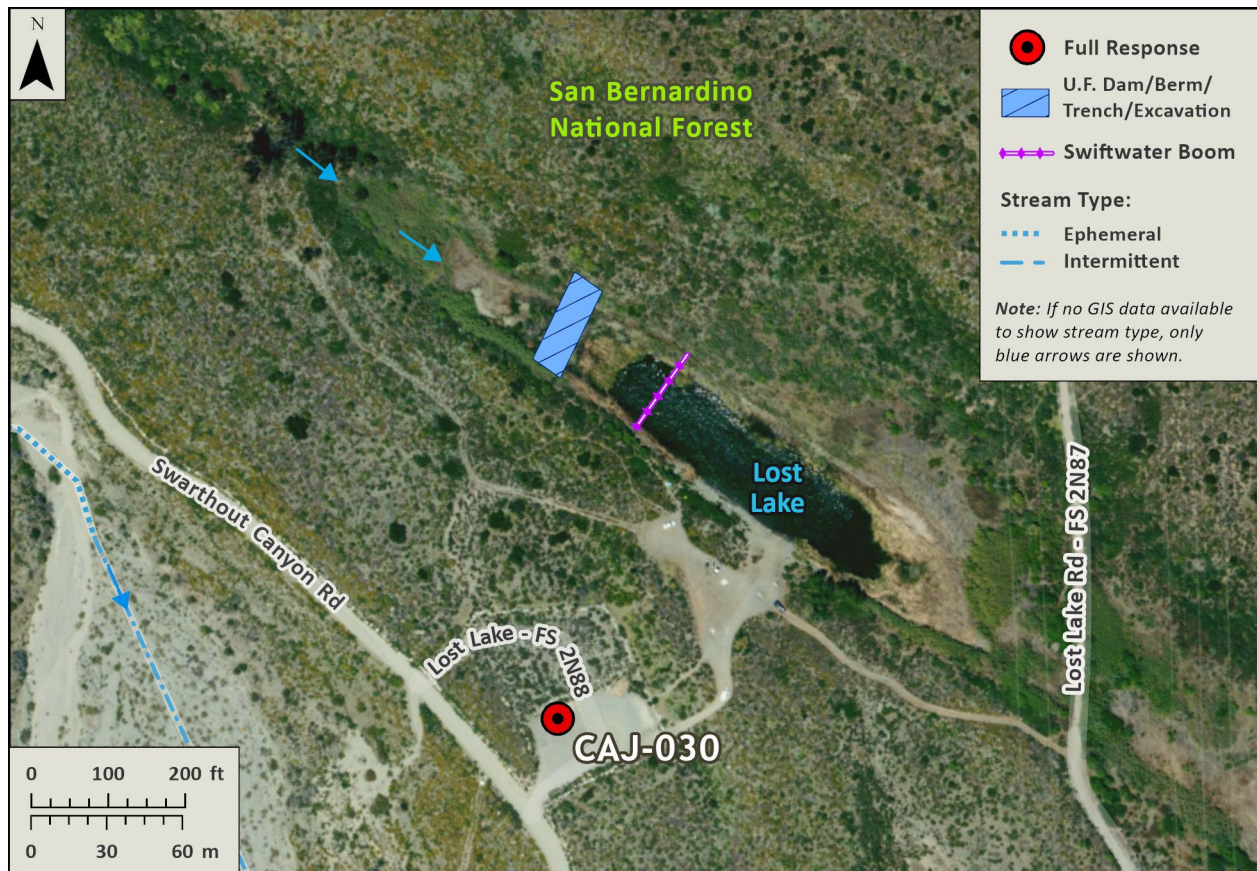


Table of Response Resources

Type	Sub-Type	Size	Unit	Quantity	Special Equipment or Comments
Boom	Harbor	18-24 in. skirt	Feet	150	
Backhoe/Excavator					For earthen berm/underflow dam
Piping					For earthen berm/underflow dam