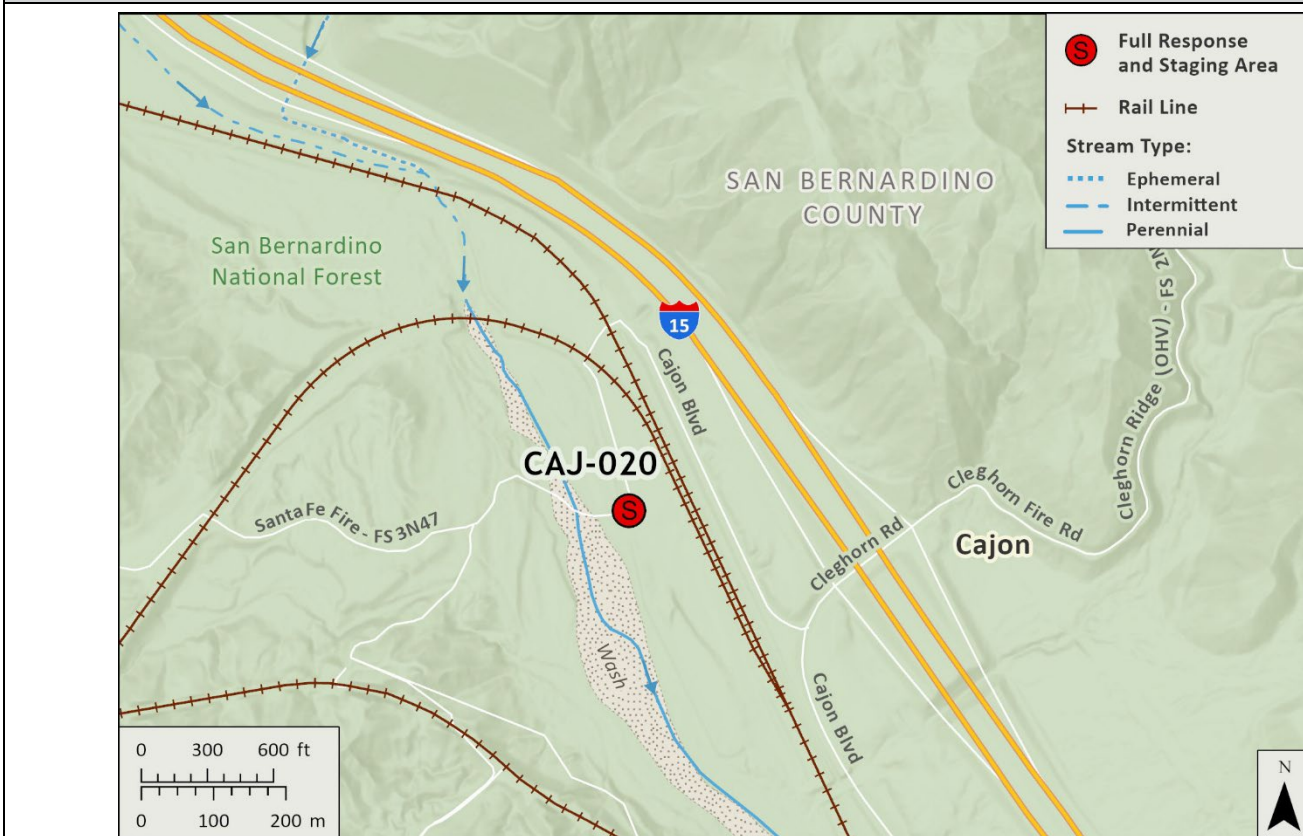


Driving Directions:	From North I-15 exit Cleghorn Rd., turn left (west) under the freeway then turn right on North Cajon Blvd., road ends at BNSF access. Caution active train tracks.		
	From South I-15 exit Cleghorn Rd., Turn right then an immediate right onto North Cajon Blvd., road ends at BNSF access. Caution active train tracks.		
Latitude/Longitude: 34.299622, -117.461304	Highway Postmile: SBD-15-20.2	Railroad Milepost: BNSF 62 80	Cell Service: Yes

Nearest Address: Santa Fe Fire Road & Cajon Blvd. San Bernardino, CA 92407

Overview Street Map



Hazards, Restrictions and Advice for Responders

- Dirt road access
- Active train tracks
- Train tracks crossing to access site
- Large staging area
- Rattlesnakes

Resources-At-Risk

Ecological: Arroyo Toad, Southwestern Willow Flycatcher, Two-striped Garter Snake, White-Bracted Spineflower

Economic: BNSF RR Yard

Tribal: Contact the Native American Heritage Commission at (916) 373-3710.

Cultural and Historic: Contact the South Central Coastal Information Center at (657) 278-5395.

Site Description and Field Notes

Site Location/Segment:	Site Description and Field Notes: Strategy/response will depend on water flow. There is a manmade structure on the southeast edge of the riverbank. A roadway leads into the stream. Large staging area.			
Gradient: Low Slow	River Width: 115 m (377 ft)	Vehicular Access: 4WD Pickup	Recreational Use: N/A	Boat Launches: N/A
Site Contact/s:	UP Railroad - (888) 877-7267 BNSF Railroad- (800) 832-5452		San Bernardino National Forest Front Country Ranger District (909) 382-2851	
ESI Shoreline Type:	1B Exposed, solid man-made structures; 3A Fine to medium-grained sand; 4 Sandy bars and gently sloping banks			

Site Images

Upstream



Downstream



Straight Across



RR = River Right RL = River Left

Photo Date: 12/28/2017

Site Objectives: Earthen berm/underflow dam to prevent further movement of oil down gradient and collection of oil.

Implementation: Minimize ingress and egress routes through vegetation to prevent erosion and disturbance of the surrounding ecosystem. Weather and water flows will determine specific site strategies.

Staging Area Location and Capabilities/Amenities/Waste Management: Large unpaved staging area.

Response Strategy Map (overview)

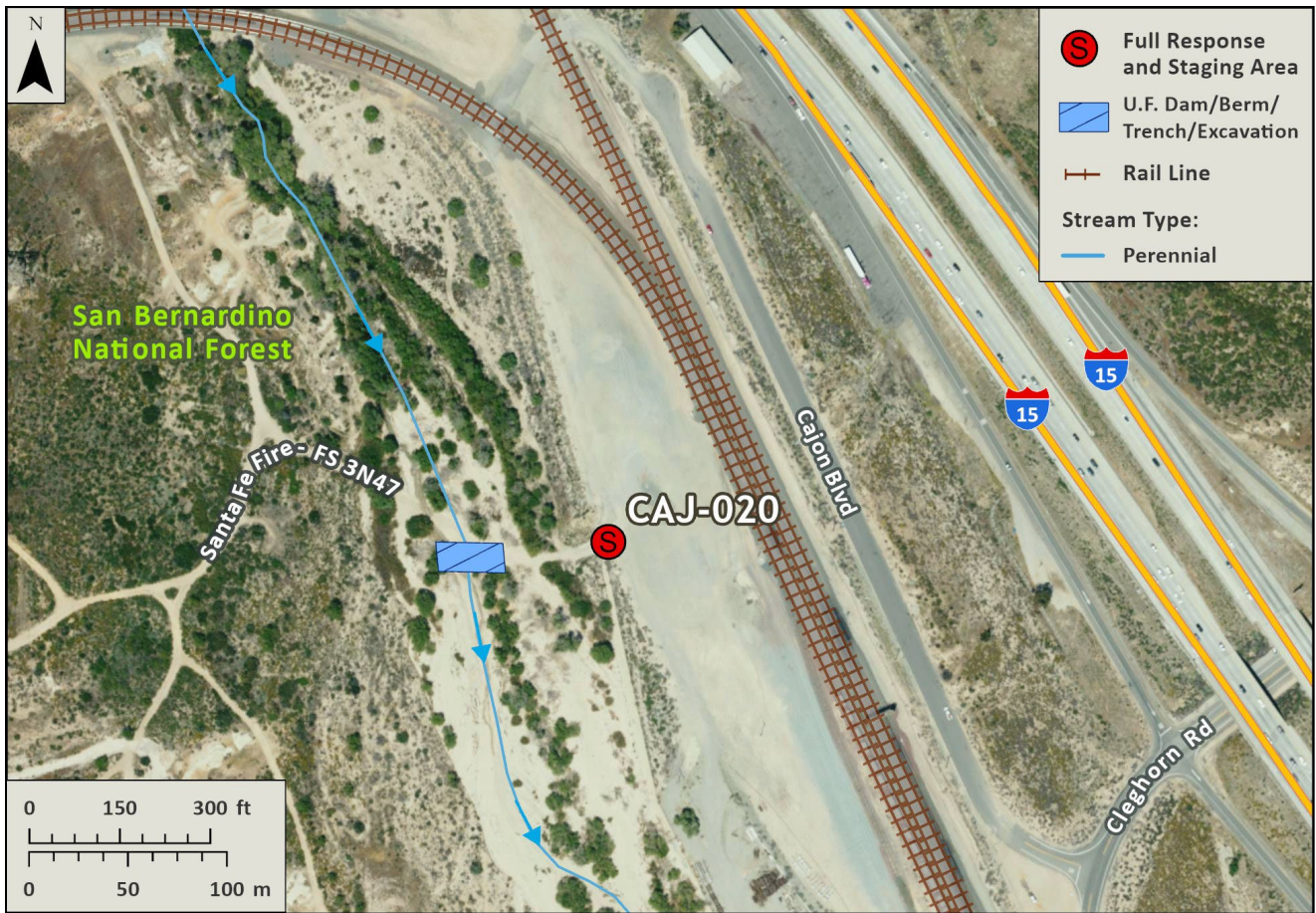


Table of Response Resources

Type	Sub-Type	Size	Unit	Quantity	Special Equipment or Comments
Backhoe/Excavator					For earthen berm/underflow dam
Piping					For earthen berm/underflow dam