

Driving Directions:

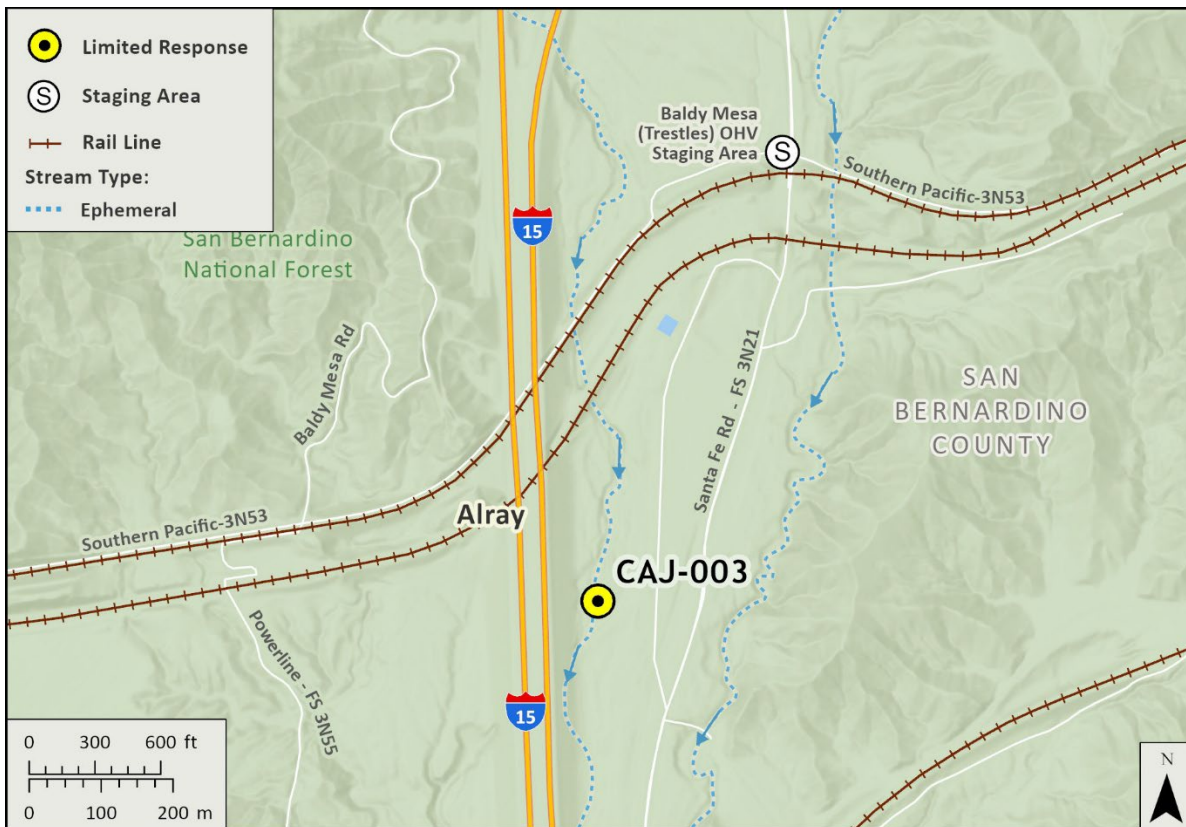
From North I-15 take the exit to Hwy 138. At the top of the off-ramp continue straight but take veer right onto the dirt frontage road (Santa Fe Rd.), to the right of the freeway entrance. Continue down dirt road for 1 mile.

From South I-15 take the exit to Hwy 138. Turn left and go over the freeway. Turn left as if going back onto the freeway but take the dirt frontage road (Santa Fe Rd.), just right of the freeway entrance. Continue down dirt road for 1 mile.

Latitude/Longitude: 34.322913, -117.481145	Highway Postmile: SDB-15-22.1	Railroad Milepost: BNSF 59 30	Cell Service: Yes
--	---	---	--------------------------

Nearest Address: 3230 Wagon Train Rd, Phelan, CA 92371

Overview Street Map



Hazards, Restrictions and Advice for Responders

Hazardous traffic is often present on HWY 138. The site is accessed by an unpaved rutted road. Watch for snakes, recreational off-road traffic, and rugged operational area challenges. Water is often absent in these desert flash flood washes.

Resources-At-Risk

Ecological: Coast Horned Lizard, Short-joint Beavertail

Economic: N/A

Tribal: Contact the Native American Heritage Commission at (916) 373-3710.

Cultural and Historic: Contact the South Central Coastal Information Center at (657) 278-5395.

Site Description and Field Notes

Site Location/Segment:	Site Description and Field Notes: Rip-rap lined dry wash immediately past the first bridge undercrossing on the left side of the road.			
Gradient: Medium	River Width: 10 m (33 ft)	Vehicular Access: Stake bed & trailer	Recreational Use: Off-roading access	Boat Launches: N/A
Site Contact/s:	San Bernardino National Forest Front Country Ranger District (909) 382-2851			
ESI Shoreline Type:	3B Exposed, eroding banks in unconsolidated sediments			

Site Images

Upstream



Downstream



Straight Across



Staging Area for CAJ-003/005



RR = River Right RL = River Left

Photo Date: 2/6/2024

Site Objectives: Earthen berm/underflow dam to prevent further downgradient migration of oil and enable oil collection when surface water is present. Intercept trench or excavation to capture oil when surface water is absent.

Implementation: Weather and water flows will determine specific site strategies.

Staging Area Location and Capabilities/Amenities/Waste Management: Baldy Mesa OHV Staging Area. Pit Toilets and large unpaved parking area further up the road.

Response Strategy Map (overview)

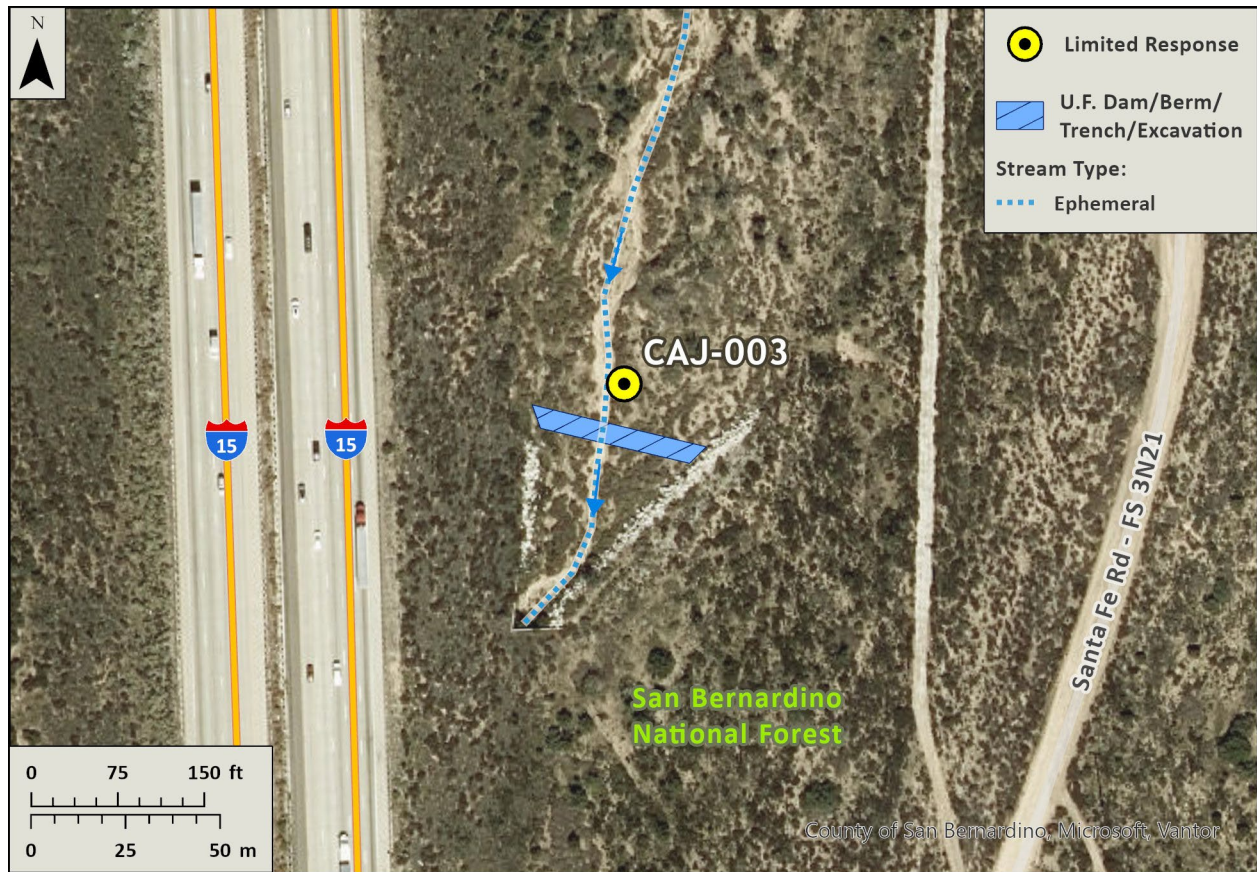


Table of Response Resources

Type	Sub-Type	Size	Unit	Quantity	Special Equipment or Comments
Backhoe/ Excavator					For earthen berm/underflow dam or intercept trench/excavation
Piping					For earthen berm/underflow dam